

Quiz - homework p55 Q13-19

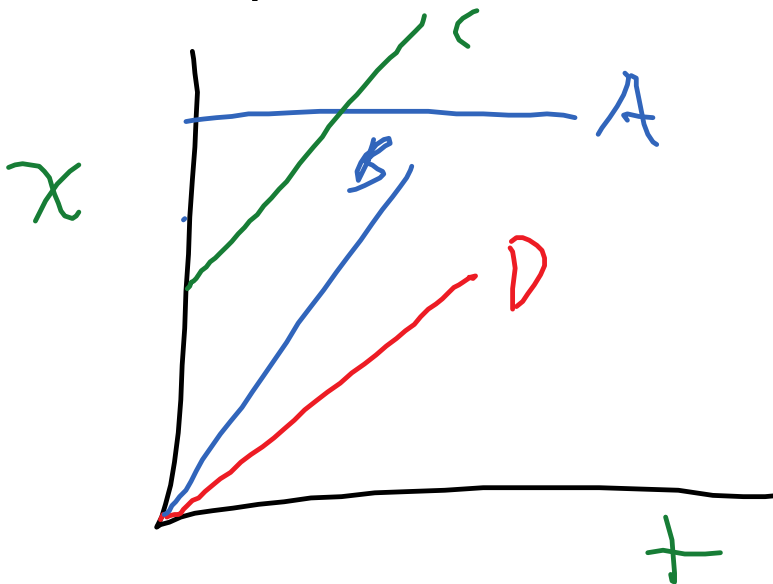
p49

CR1.1

the position of the period:

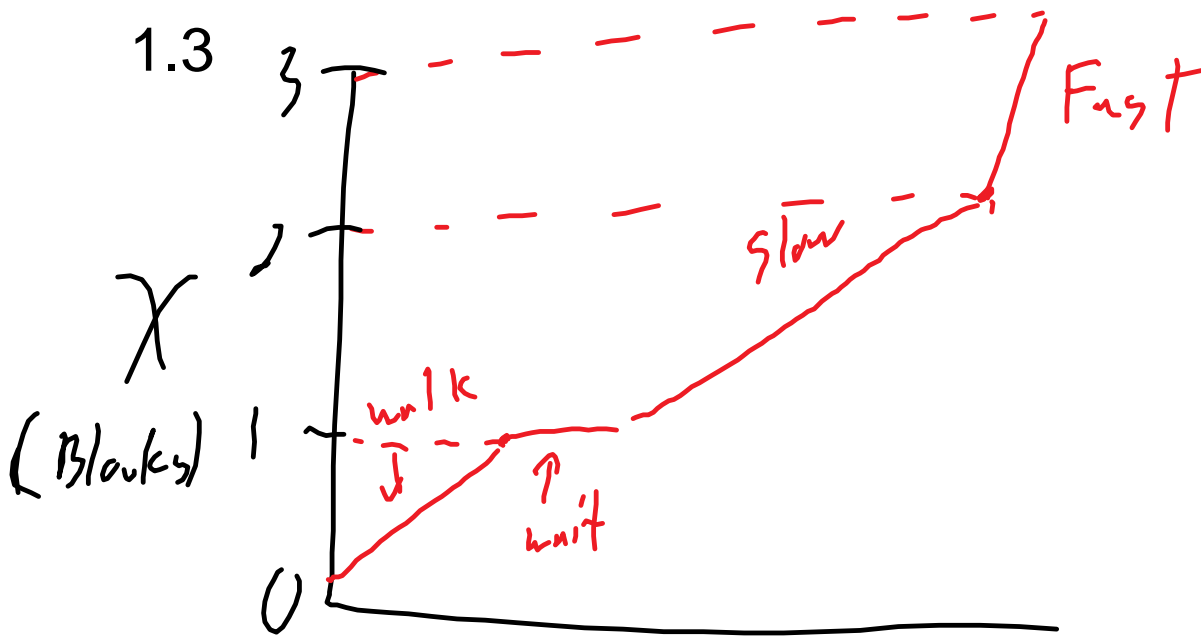
1. the period to the right of the word room.
10.1 cm from the top of the page and 4.3 cm from the left edge.
2. On top, 5cm from the North edge, 30.1 cm from the East edge.
3. 2.3 m East of the fan, 1.7 m North of the fan and 1.1m up from the floor.

1.2



- A - start above table, don't move
- B - start at the table, move at a constant speed up
- C - start off the table, move at a constant speed up
- D - start at the table, move at a slower

constant speed up



Quiz - homework p55
Q13-19